

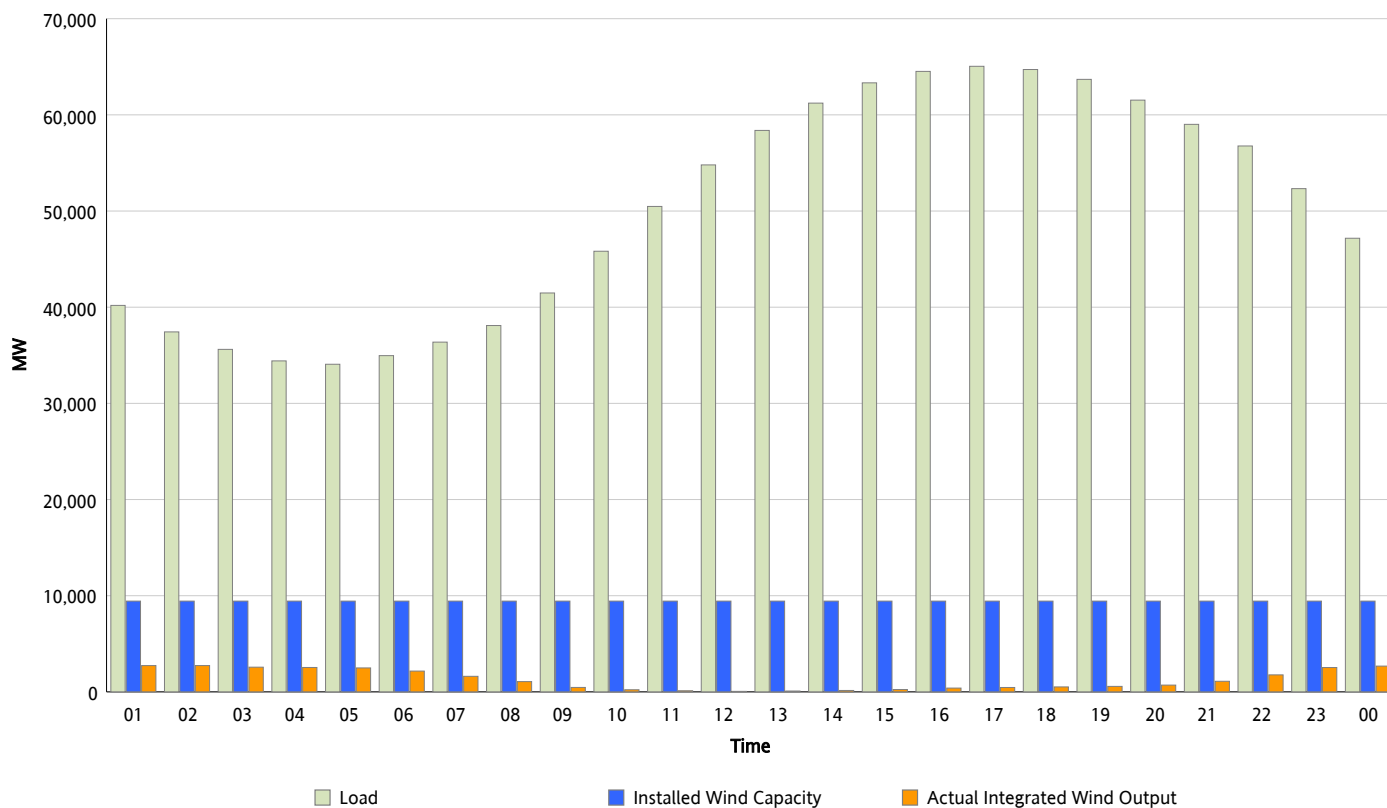


ERCOT Grid Operations

Wind Integration Report : 06/25/2012

Peak Load	65,050 MW
Load Peak Hour (HE)	17
Wind Over Peak	454 MW
Wind Record 06/19/12	8,368 MW
Max Wind Value*	2,832 MW
Wind Peak Time	00:55
Wind Integration %	7.27 %

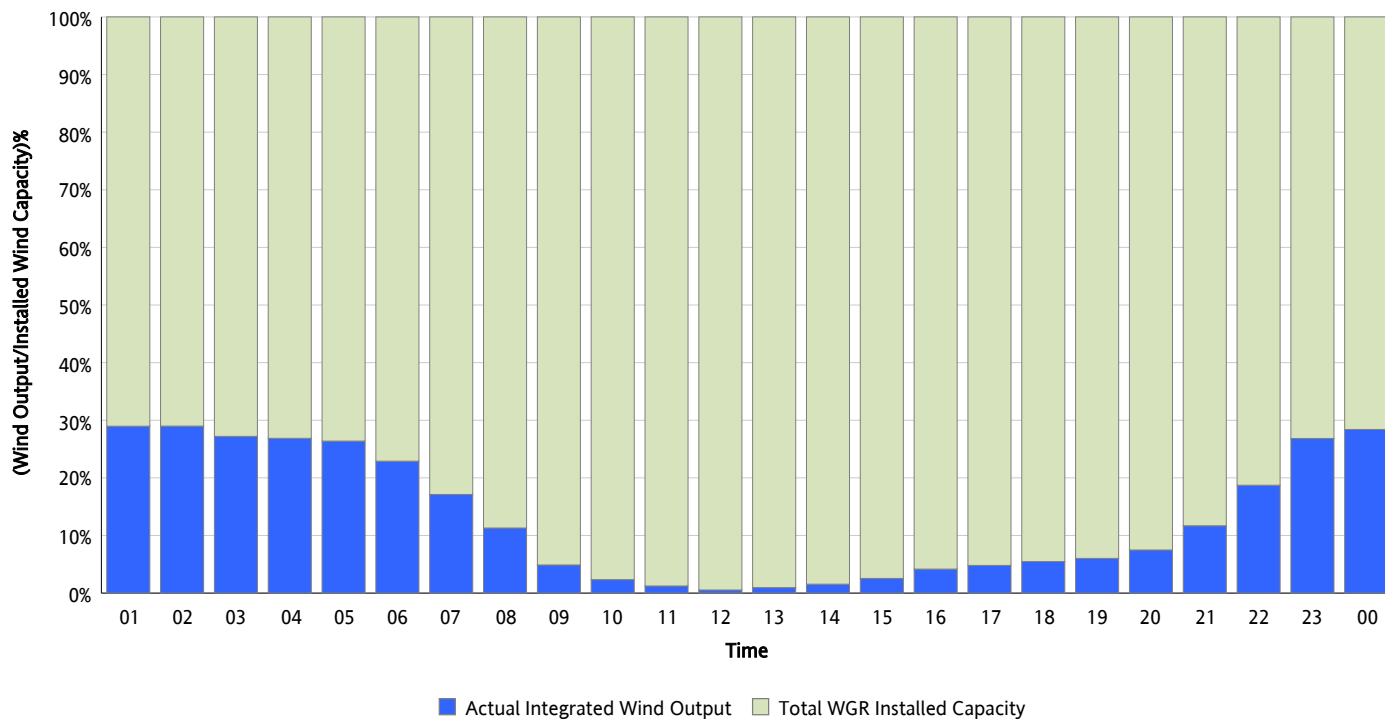
Hourly Average Actual Load vs. Actual Wind Output
06/25/2012



* Wind Record and Wind Max represent instantaneous values and the rest of the values are integrated over the hour

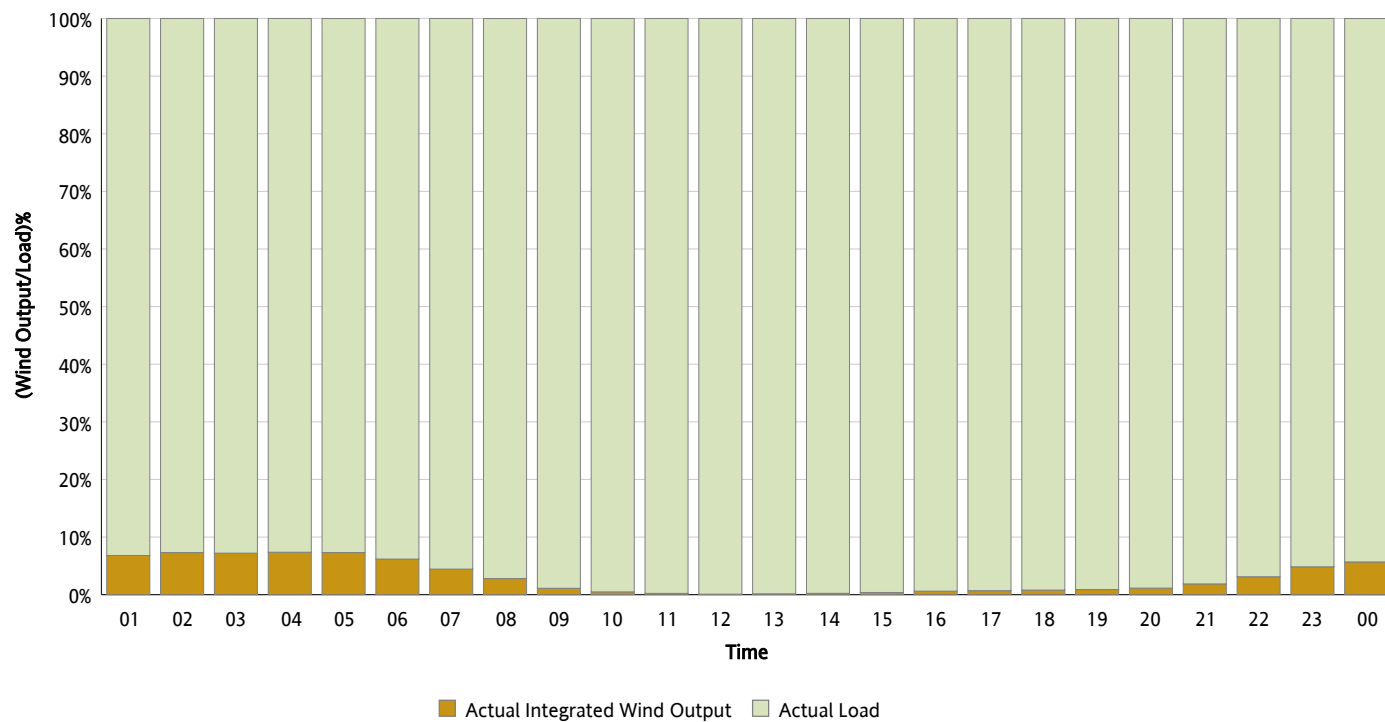
Actual Wind Output as a Percentage of the Total Installed Wind Capacity

06/25/2012



Actual Wind Output as a Percentage of the ERCOT Load

06/25/2012



ERCOT Load vs. Actual Wind Output

06/18/2012 - 06/25/2012

